



BID[®]

NINGBO BID ELECTRICAL CO., LTD.

**NINGBO FLASHMAN OPTICS &
ELECTRONICS CO.,LTD.**

Add: NO 188 Zhangshu West Road, Xidian Town, Ningbo.

Tel: +86-574-88055089 65170009

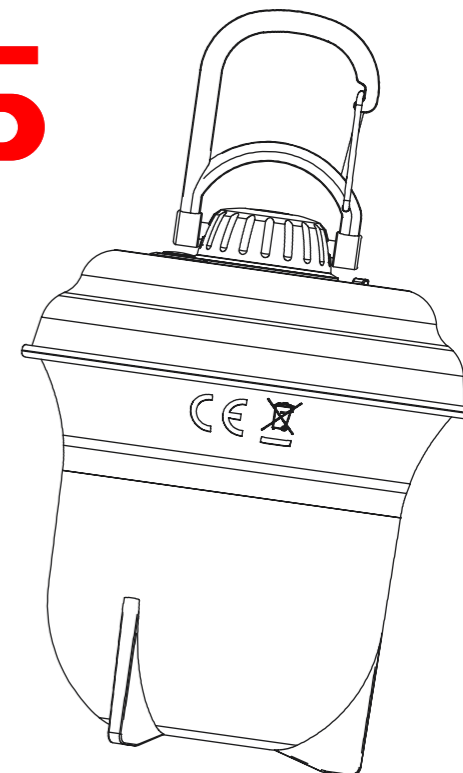
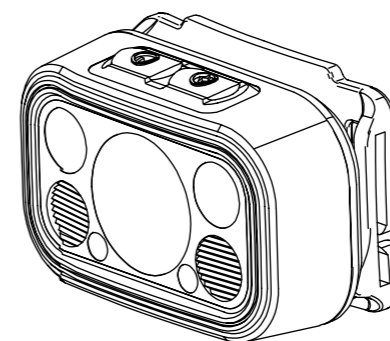
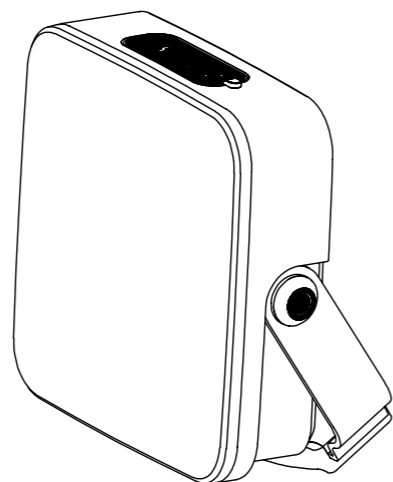
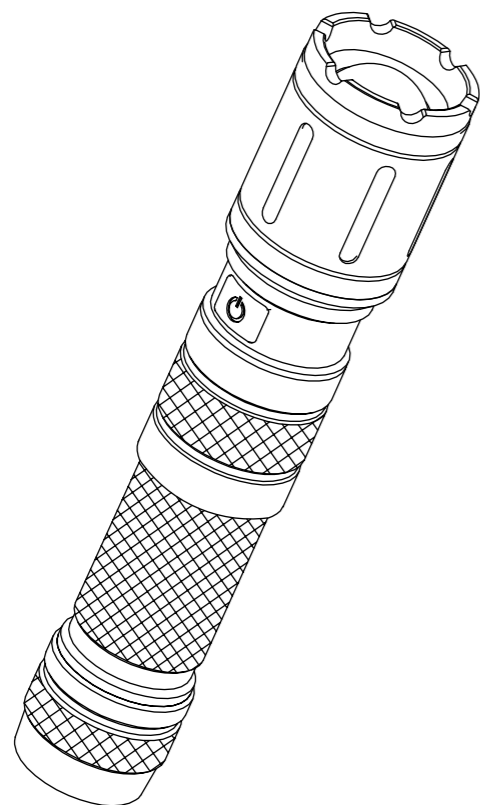
Fax: +86-574-65170001 E-mail: bid@nbbid.com

www.nbbid.com

BID[®]

NINGBO BID ELECTRICAL CO., LTD.

BRIGHT POWER WORKS



FLASHMAN[®]

2025/26

Who we are



200

With 200 employees

30

30 years of history

5500

Covering an area of 5500 m²

Ningbo Bid Electrical Co., Ltd. is located in the city of Ningbo, a very important port city in China. It is well situated, and affords us the convenience of communication in both traffic and information. The company is a specialist producer of hardware and plastic wares, including different types of electronic flashlights and outdoor lamps. And, we are backed by our professional technical and production teams. Our products covering different kinds and specifications, are sold well across the whole country, Europe and America also far to South Africa \Hongkong and Australia. We are also cooperating with "NIGHTSTICK" RAYOVAC "VARTA" "Dorcy".....in excellent terms. Custom light and OEM for the Military Industrial District has been our strength after 30 years of development.

Our company was founded in 1990. With all our efforts in dealing with the competition and challenges we have faced in recent years, we have grown to become what we are today - a modern business with 5,500 square meters and 200 employees. We have an entire suite of digitally controlled injection machines and CNC machines that help us have superior technical performance. We have consistently improved our production quality and management systems, have our own laboratory to maintain quality control and have obtained ISO9001:2008 BSCI certification to meet and even outperform our customers' requirements.

We believe in "The future depends on quality; Success depends on the details.

Light from the sun takes more than eight minutes to reach Earth - with the BID light, it's just a push of a button away. We create light. Even in the furthest, darkest corners of the world.

BID®



Machining center



Injection workshop



Automatic gluing



Assembly line



Semi-automatic assembly



Parts warehouse

Quality control

Laboratory Equipment



IPX3-6 waterproof tester



High-temperature test chamber



IPX8 waterproof tester



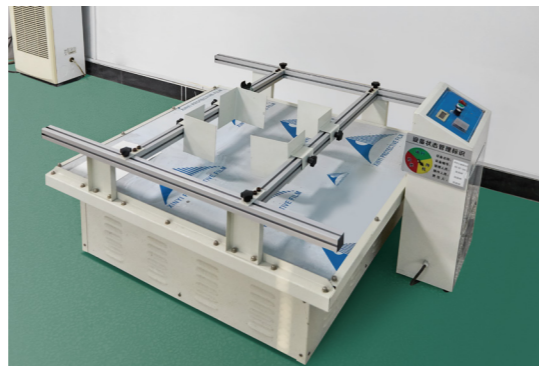
Precision salt spaying tester



Lux test camera



Own Laboratory



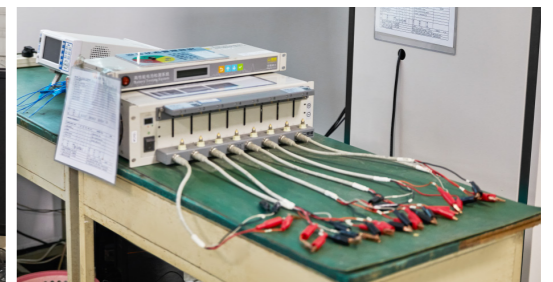
Simulated transportation tester



Accurate Appay Spectrometer



RoHS*2.0 scanner



High-performance battery detection system



Air-leakagedetector



Switching life tester



Hipot Tester



Multichannel temperature tester



HEADLIGHTS



Self capable wave sensing

HYBRID POWER



MODEL 363

LED	2pcs Samsung+ 3030 red light	Charging time	4h
Brightness	ON/OFF switch: main light high-720lm; low-220lm; Sensor switch:side red light on-flashing-OFF spot 250lm Red light on-SOS	Usage time	Main light:2.5h-11h red light: 8.5h-16h
Battery type	2000mAh,3.7V 18650 lithium battery	Input	Type-C 5V1A
Size	78.5* 51.5* 34.5mm +battery case 89*46*34.5mm	IP	X4
Weight	146g	Material	Aircraft aluminium+ABS+PC



Self capable wave sensing

RECHARGABLE



MODEL 365

LED	1pc Samsung P8+ 3535 white+3030 red light	Charging time	1.5h
Brightness	ON/OFF switch: main light high-220lm; low-100lm; Function switch:flood white 110lm;red light SOS Sensor function: either switch long press 2S turned on/off sensor function	Usage time	Main light:3.5h-8.5h flood white 8h; SOS 16.5h
Battery type	600mAh 3.7V li-polymer	Input	Type-C 5V0.5A
Size	48*26*37mm	IP	X4
Weight	50g	Material	ABS+PC



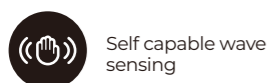
380A



380B

MODEL 380A&380B

LED	3W COB+ 3pcs Red light + 3pcs Green light	18pcs white SMD+3pcs Red light+3pcs Green light
Brightness	115LM	200LM
Battery type	400mAh lithium	400mAh lithium
Function	COB high (3h) - COB low (3.5h) - red light flashing-red mixed green light flashing-off	White high-low- red light flashing-red mixed green light flashing-off
Input	5V0.5A 1.5h	5V0.5A 1.5h
Size	56*42*22mm	56*42*22mm
Weight	26g	26g
Material	ABS	ABC



Self capable wave sensing

**HYBRID
ULTRA LIGHT**

MODEL 377

LED	CREE XTE3+XTE
Brightness	XTE Low: 70lm- XTE High:200lm XTE Low: 50lm- XTE High:160lm
Battery type	1*AA/ 1*14500 3.7v li-thium battery
Usage time	XPG Low: 5.5h- XPG High:2.5h XTE Low: 11h- XTE High:4h
Size	50.5*29x35mm
Weight	36.5g
IP	X5
Material	ABS+PC

Hold sensor switch 2 seconds in either mode, blue indicator is on, Gesture control Hybrid power design use 1*AA alkaline or 1*14500 lithium battery.

Low Battery Message System

Early detection of low battery capacity by „Low Battery Message System“ (LBMS). The red indicator starts flashing at a low remaining capacity 20%.



Usb Charging port

**HYBRID
POWER**

MODEL 322

LED	CREE XPG warm 1pc+XPG cool 4pcs+2pcs red light	Charging time	2h
Brightness	Warm light:low-150lm;middle-320lm;high-650lm Cool light flood: 120lm; spot 250lm Red light on-SOS	Usage time	Warm light:5h-4h-2.5h cool light Flood /spot:12h/8h
Battery type	1000mAh,3.7V LI-polymer/3XAAA alkaline battery	Input	Type-C 5V1A
Size	64*44*38mm	IP	X6
Weight	91g	Material	ABS+PC



RECHARGABLE

MODEL 323

LED	CREE XPG warm 1pc+XPG cool 4pcs+2pcs red light	Charging time	2h
Brightness	Warm light:low-150lm;middle-320lm;high-650lm Cool light flood: 120lm; spot 250lm Red light on-SOS	Usage time	Warm light:5h-4h-2.5h cool light Flood /spot:12h/8h
Battery type	1000mAh,3.7V LI-polymer	Input	Type-C 5V1A
Size	64*44*38mm	IP	X4
Weight	87g	Material	ABS+PC



**DUAL-USE
RECHARGABLE**



MODEL 321

LED	XPG-3LED2pcs+3030SMD (WARM10pcs, COLD10pcs)	Charging time	2h
Brightness	XPG high:380lm;low:200lm; Flood cool/ Warm :180lm	Usage time	XPG high:3h;low:6.5h; Flood cool/ Warm :3.5h
Battery type	1500mAh,3.7V LI-polymer	Input	Type-C 5V1A
Size	60.5*41.8*38.5mm	IP	X4
Weight	185g	Material	ABS+PC



HEAD LIGHT

MODEL 301

LED	6 white +2 red Led	Usage time	16h
Brightness	White light :80lm	Operation	High-low-2side Flashing-OFF
Battery type	3*AAA	IP	X4
Size	72*50.5*48mm	Material	ABS
Weight	52g		

DUAL-USE

MODEL 319



Mosquito repellent

LED	1 pc XPG+10pcs white +4 pcs yellow+ 2 pcs red	Charging time	1 h
Brightness	XPG high:200lm-Low120lm SMD high:130lm-Low50lm	Usage time	XPG high: 3h; Low 6.5h SMD high: 6h; Low9h
Battery type	Li-polymer 3.7V 600 mAh	Input	Type-C 5V1A
Size	48*36*30mm	IP	X3
Weight	31g	Material	ABS+PC



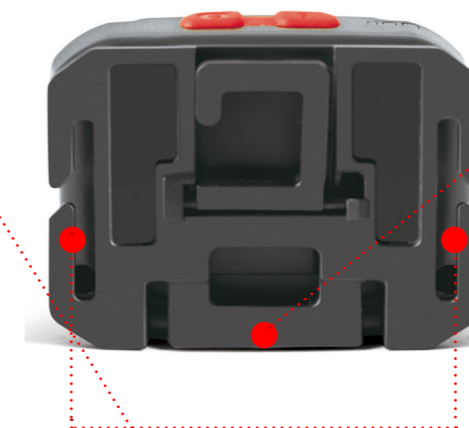
Snap design



Adjustable 90° Angle



Easy disassembly



Hanging in tent for lighting



RECHARGABLE

MODEL 328

LED	CREE XPL	Output	Run time	Distance	
Brightness	600lm-380lm-270lm-170lm			Flood light	Spot light
Battery type	3.7V 2000mAh 18650 lithium battery	high	380lm 2h	29m	100m
Charging time	2-4 hours (depend on battery capacity)	med	270lm 8h	19m	74m
Usage time	2-25h	low	170lm 14h	14m	46m
Input	100-240V 50/60hz 5V1A	eco	90lm 25h	9m	30m
Size	70.5*51.4*42.5mm	brust	600lm 1.5h	43m	147m
Weight	135g				
IP	X4				
Material	Aircraft aluminum+ ABS				

RECHARGABLE



Rotate the focusing ring counterclockwise to spotlight and clockwise to floodlight



MODEL 329

LED	CREE XPG	Output	Run time	Distance	
Brightness	400lm-320lm-140lm-80lm			Flood light	Spot light
Battery type	850mAh Li-polymer battery	high	320lm 3.5h	37m	96m
Charging time	1h	med	142lm 7h	25m	64m
Usage time	2-14h	low	80lm 14h	18m	46m
Input	5V1A	eco	30lm 27h	12m	30m
Size	70.5*51.4*42.5mm	brust	400lm 3h	43m	147m
Weight	120g				
IP	X4				
Material	Aircraft aluminum+ ABS				



Self capable wave sensing

CAPLIGHT

MODEL 317

LED	1pcXPG+ COB 0.2w
Brightness	XPG :120lm-COB 100lm Both on: 200lm
Battery type	500mAh li-polymer
Usage time	XPG:3h-COB 4h; Both on: 2h
Input	Type-c 5V1A
Sensor	10-20cm
Size	64*40.2*27mm
Weight	37g
IP	X4
Material	ABS

DUAL-USE

MODEL 314C

LED	XPE LED
Brightness	100lm
Battery	3.7V 500mAh Polymer lithium battery
Usage time	2h
Input	Type-C 5V1A
Size	61*42*13mm
Weight	31g
IP	X4
Material	ABS



Self capable wave sensing



MODEL 312 & 312COB

LED	XPE LED	1W COB
Brightness	120lm	100m
Battery type	3.7V-650mAh Polymer lithium battery	3.7V-650mAh Polymer lithium battery
Charging time	1h	1h
Usage time	1.5h	1.5h
Input	Type -C 5V1A	Type -C 5V1A
Size	75*40*28mm	75*40*28 mm
Weight	40.3g	40.3g
IP	X4	X4
Material	ABS+ALU	ABS



Capacity display

HEADLIGHT
EASY



MODEL 326

LED	CREE XPG + COB	Usage time	2h 30min~ 30Hours
Brightness	XPG Low: 60lm; XPG High:300lm COB Low:20lm; COB High:70lm	IP	X6
Battery type	3XAAA	Material	ABS+TPR
Size	37*44*60mm		
Weight	62g		

HEAD LIGHT



MODEL 309

LED	XPE+2 side red/white	Usage time	High mode:4h, Low mode 10h,2side white flashing 60h
Brightness	High mode:150lm, Low mode 60 lm	Operation	High-low-2side Flashing-OFF
Battery type	3*AAA	IP	X5
Size	60*48.5*30mm	Material	ABS
Weight	32g		

ULTRA LIGHT
PORTABLE



MODEL 308

LED	CREE-XPE	Size	58*29*22mm
Brightness	75lm	Weight	19g
Battery	1*AAA	IP	X4
Usage time	1.5h	Material	ABS+ aircraft aluminium pipe inside

HEAD LIGHT



MODEL 309C

LED	3w COB	Operation	ON-OFF
Brightness	130lm	Usage time	10h
Battery type	3*AAA	IP	X5
Size	60*48.5*38mm	Material	ABS
Weight	32g		



CAMPING LANTERN



IN/OUT
charging port



HOOK



POWERBANK PINE CONE LANTERN

MODEL 356



LED	3030-0.5W 6pcs warm light+6pcs cool light+3pcs2835-0.3W red light
Brightness	Cool light high: 200lm;Cool light middle: 100lm; Warm light high: 200lm; Warm light middle:100lm.
Battery type	1*18650 1200/2000mAh
Usage time	Cool light high: 4h; Cool light middle: 8h; Warm light high: 4h; Warm light middle: 8h.
Input	Type-C 5V1A
Output	5V1A
Operation	Cool light high-middle-warm light high-middle -SOS- off ; Any mode long press turn on the dimming function
Size	92*92*110mm
Weight	189g
IP	X6
Impact resistance	2m
Accessories	Type C data line



**CAMPING
LANTERN**



Output/input



HOOK

MODEL 310C

LED	XPG
Brightness	High mode: 190lm Middle mode: 95lm Low mode: 40lm
Battery type	1*18650 2000mAh lithium battery
Charging time	2.5h
Usage time	High mode: 3.5h Middle mode: 6h Low mode: 13h
Input/output	5V1A
Size	96.7*96.7*142mm
Weight	320g
IP	X4
Material	ABS



**CAMPING
LANTERN**

MODEL 310M

LED	CREE-XPG
Brightness	120lm
Battery type	4*AA
Usage time	15h
Operation	HIGH-MIDDLE-LOW-OFF
Size	57*57*86mm
Weight	180g
IP	X4
Accessories	HOOK



USB charging port



HOOK

**HYBRID POWER
LANTERN**

MODEL 330

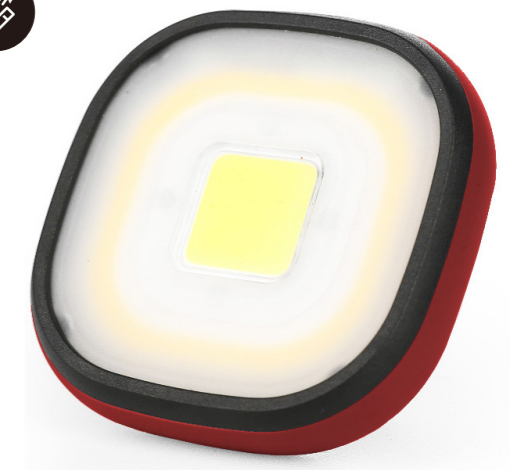
LED	3*COB 6W
Brightness	High mode: 200lm Middle mode: 100lm Low mode: 55lm
Battery type	1*18650 lithium or 2*AA alkaline
Usage time	High: 4h, middle 6.5h, low 8.5h
Input	5V1A
Size	95*134mm
Weight	233g
IP	X4
Material	chemical resistant Anti-static Impact Modified PC



**STEPLESS DIMMING GLOW IN THE DARK
POWERBANK TENT LANTERN**

MODEL 379

LED	10W 18000k + COB 5W(R&W)
Brightness	COB high: 260lm, middle: 155lm low: 80lm Side high: 230lm, middle: 140lm ; low: 70lm Both high: 450lm; middle: 270lm, low: 138lm
Battery	2000mAhLi-polymer
Usage time	COB high: 11.5h; middle: 13h , low: 16.5h Side high: 6.5h; middle 8.5h;low: 12h Both high: 5h, middle: 6h; low: 8h
Input	Type -C 5V1A
Output	5V1A
Size	85.2*84.2*20.2mm
Weight	99.5g
IP	X4
Material	ABS+PC

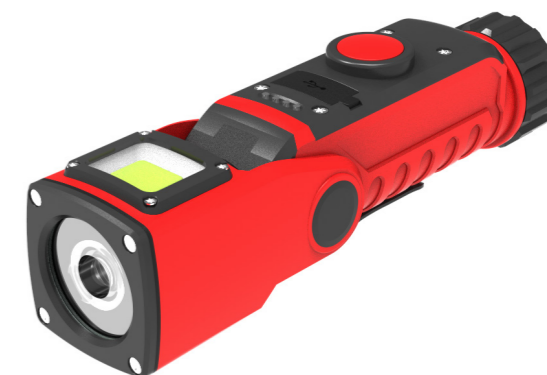




Multi-function constant current work light RECHARGEABLE

MODEL 551

LED	1pc Samsung (6500K)+ 3W COB(white + red mixed)
Brightness	ON/OFF switch: White high (410lm) – low(210lm)- OFF : side light COB white : 200lm; red light
Battery type	2000mAh,3.7V 18650 lithium battery
Charging time	3-4h(depend on battery capacity)
Usage time	constant current 1.5h-11h
Input	Type-C
Output	USB 5V1A
Size	38*145.5*42mm
Weight	130g without battery
IP	X6
Material	PA66+PC+MAGNET



SPOTLIGHT RECHARGEABLE

MODEL 560

LED	P8
Brightness	130lm-1700lm High--low mode -SOS- flashing
Battery type	4400 mAh lithium
Charging time	5.5H
Usage time	high mode 6h- low mode 19h30m
Input	Type-C 5V2.1A
Output	Type-C 5V2.4A
Size	186*170*93mm
Weight	570g
IP	X7
Material	PA66+PC



WORKLIGHTS



MULTIFUNCTIONAL HIGH POWER WORKING LIGHT



MODEL 538

LED	36pcs warm light+ 36pcs white light	charging time	5h
Brightness	ON/OFF switch: White -Warm- Mixed light : max 1100 LM; Step less dimming switch: 10%-100%	Usage time	constant current 3h-32h
Battery type	Capacity approx. 33 Wh 7.4V LI-ION	Input	Type-C 12V
Output	USB 5V2A	IP	X6
Size	155*117*82mm(fold)	Material	ABS+PC
Weight	700g		

HIGH POWER

MODEL 539



LED	36pcs warm light+ 36pcs white light	charging time	5h
Brightness	ON/OFF switch: White -Warm- Mixed light : max 1100 LM; Dimming switch: 10%-100%	Usage time	constant current 2.5h-35h
Battery type	4400mAh 4.7V lithium	Input	Type-C 12V
Output	USB 5V2A	IP	X6
Size	167*211.5*140.5mm	Material	ABS+PC
Weight	880g		

WORKING LIGHTS





POWER BANK EMERGENCY WORKING LIGHT



It can be rotated 90°

Output/input



MODEL 355



LED	36pcs white + 25pcs warm (SMD)	charging time	2-3h
Brightness	Warm light high: 780lm, low: 400lm Cold light high: 810lm, low: 450lm Mix light high: 820lm, low: 580lm	Usage time	Warm light high: 1h40m, low: 4h Cold light high: 1h40m, low: 4h Mix light high: 2h20m, low: 1.5h
Battery type	2000mAh, 3.7V LI-18650	Impact resistance	1M
Output	5V1A	Input	Type-C 5V1A
Size	99.5*92.5*31.5mm	IP	X6
Weight	186g	Material	ABS+PC



SMALL FIGURE MAXIMUM BRIGHT

MODEL 529



LED	12pcs 2835 cool white LED +12pcs 2835 warm white +T6+ warning light(4 red /4blue side led)		
Brightness	T6 low(100lm/40h)-T6 high(200lm/20h)-HIGH(400lm/4h)12pcs on :200lm; warning light blink-SOS	Battery	4000mAh(18650*2) rechargeable lithium battery
Usage time	4-40h	Input	Type-C 5V1A
Size	111.4*113.2*34.7mm(with holder)	IP	X6
Weight	264.8g	Accessories	Magnet in base



RECHARGABLE PANEL LIGHT



Type-C port

MODEL 526

LED	15pcs SMD2835 6500K
Brightness	600lm-300lm-150lm
Battery	1pcs 4000mAh 18650 3.7V with protect
Usage time	3-6-10hours
Size	114*113.2*34.7mm
Weight	265g
IP	X7
Accessories	Magnet, Type C data line



RECHARGABLE PANEL LIGHT



Tripod Hole



Magnet base

MODEL 527

LED	43pcs SMD2835 6500K
Brightness	1000lm-500lm-250lm
Battery	1pcs 4000mAh 18650 3.7V with protect
Usage time	2-4-6 hours
Size	156*115.2*34.7mm
Weight	321g
IP	X7
Accessories	Magnet, Type C data line



**FLEXIBLE TOOL
WORKING LAMP**



Bottom magnet



Charging indicator switch



Type-C port



Bottom magnet



531A

531B

531

MODEL 531range

LED	XML6500K	7W COB 6000-6500K	8W COB 6000-6500K
Brightness	High mode:400lm Low mode:200lm	High mode:700lm Low mode:400lm	High mode:1000lm Low mode:500lm
Battery type	18650 in 2000mAh	18650 in 2000mAh	18650 in 2000mAh
Charging time	2-4h	2-4h	2-4h
Usage time	3-5h	2-3h	2-4h
Input	5V1A	5V1A	5V1A
Size	φ40*370mm	φ40*370mm	438*69*40mm
Weight	320g	318.7g	320g
IP	X4	X4	X4
Material	ABS+Alu	ABS+Alu	ABS+Alu

MODEL XH-212

LED	P50*2	charging time	2h3h
Brightness	100LM-1200LM Function switch:flood white 110lm; red light SOS	Usage time	1h40m-12h30m
Battery type	4500 mAh 21700lithium	Input	Type-C 5V2.1A
Output	Type-C 5V2.4A	IP	X4
Size	106*30*46mm	Material	Aircraft Aluminium+PC
Weight	168 g		

**SMALL FIGURE
MAXIMUM BRIGHT**

MODEL XH-225

LED	P50*2	charging time	3h
Brightness	100lm-1200lm; High-middle-low mode; Far distance beam- short-distance beam-mixed beam	Usage time	1h40m-12h30m
Battery type	4500 mAh 21700lithium	Input	Type-C 5V2.1A
Output	Type-C 5V2.4A	IP	X4
Size	102*42*36mm	Material	Aircraft aluminium+PC
Weight	183 g		





**MAGNET BASE
WORK LIGHT**

MODEL 522

LED	CREE XPG3 + 3W COB
Brightness	XPG : 180lm- COB:220lm RED Light flashing
Battery type	4*AA
Usage time	XPG: 5h COB: 13.5h
Size	59.5*189.7*39.8mm
Weight	147g
IP	X4
Material	ABS+PC
Accessories	Magnet/ Hook

**USB/SOLAR
RECHARGABLE**

MODEL 533

Charging	USB/Solar charging
Lumen	Main light high:280lm; Low:140lm Side light white:650lm; Side light warm:580lm
Battery type	1800 mAh built -in lithium battery
Usage time	Main light high: 6.5h; Low: 13h Side light white:4h; Side light warm:3.5h
Power	3W+15W
Size	178*112.5*85mm
Weight	293g
IP	X4
Material	ABS



**MAGNET BASE
PEN CLIP**

MODEL 521

LED	CREE XPE + 15 SMD
Brightness	150lm 15SMD : 120lm
Battery	2XAA
Usage time	12h
Operation	CREE ON-15 SMD FULL ON-15 SMD LOW-OFF
Size	151*46*36.5mm
Weight	32g
IP	X3
Accessories	Magnet/Hook



**HIGH
POWER**

MODEL 532

LED	10W 18000k + COB 5W(R&W)
Brightness	Main light high:250lm;low160lm COB high:140lm,low 70lm COB red: 6lm
Battery	1*18650 -1500mAh
Charging Time	1.5h
Usage time	Main light high:2.5h;low 3h COB high:4.5h,low 10h COB red: 40h
Input	5V1A
Size	146*85*119.5mm
Weight	208.8g
IP	X4
Material	ABS+PC





FLASHLIGHTS



HYBRID RECHARGEABLE

MODEL 908

LED	*CREE XML-U3
Brightness	High mode: 650lm Middle mode: 350lm Low mode: 150lm
Battery type	*18650 or 3*AAA Alkaline
Usage time	High mode: 2.5h Middle mode: 4.5h Low mode: 10h
Size	36*172mm
Weight	279.5g
IP	X4
Material	Aluminium



Dust-proof charging port



ANTI-DROP MAGNET BASE

MODEL 523

LED	CREE XPG + 3W COB
Battery	3XAAA
Brightness	XPG: 240lm COB: 50lm
Usage time	XPG: 9h COB: 15h
Size	Φ43.5*140mm
Weight	124g
IP	X4
Accessories	Magnet Carrying strip

ANTI-DROP MAGNET BASE

MODEL 524

LED	CREE XPG3 + 3W COB
Battery	4XAA
Brightness	XPG: 300lm COB: 150lm
Usage time	XPG: 6h COB: 11h
Size	Φ62*216mm
Weight	250g
IP	X4
Accessories	Magnet Carrying strip